
**PUBLIC SCHOOLS of
BROOKLINE**

Advisory Panel 4:
Public Health, Safety, & Logistics

Meeting Slides

January 7, 2022

Community Benchmarks - Status

Benchmark (each measured over prior 14 days)	Status 11/20/21	Status 12/4/21	Status 12/18/21	Status 1/1/22
Avg. daily new case count in Brookline = <10 per 100k people	8.8	14.2	24.8	90.2
Avg. daily new case count in Mass. = <10 per 100k people	30.5	47.7	67.5	151.7
Avg. test positivity rate in Brookline = <5.0%	0.57%	1.03%	1.53%	8.90%
Avg. test positivity rate in Massachusetts = <5.0%	2.89%	4.46%	5.66%	15.03%

Panel 4 selected these four community transmission benchmarks in August 2020 as triggers for focused evaluation and discussion of whether changes in operations are warranted, not as definitive indicators of in-school risk or thresholds for automatic action. Research and PSB-specific data since that time have convincingly shown that in-school transmission risk can be kept very low even at high levels of community case incidence.

MA DPH Color Scale



Massachusetts Department of Public Health COVID-19 Dashboard - Thursday, November 12, 2020
Average Daily Incidence Rate per 100,000 Color Calculations

Incidence Rate Color Table

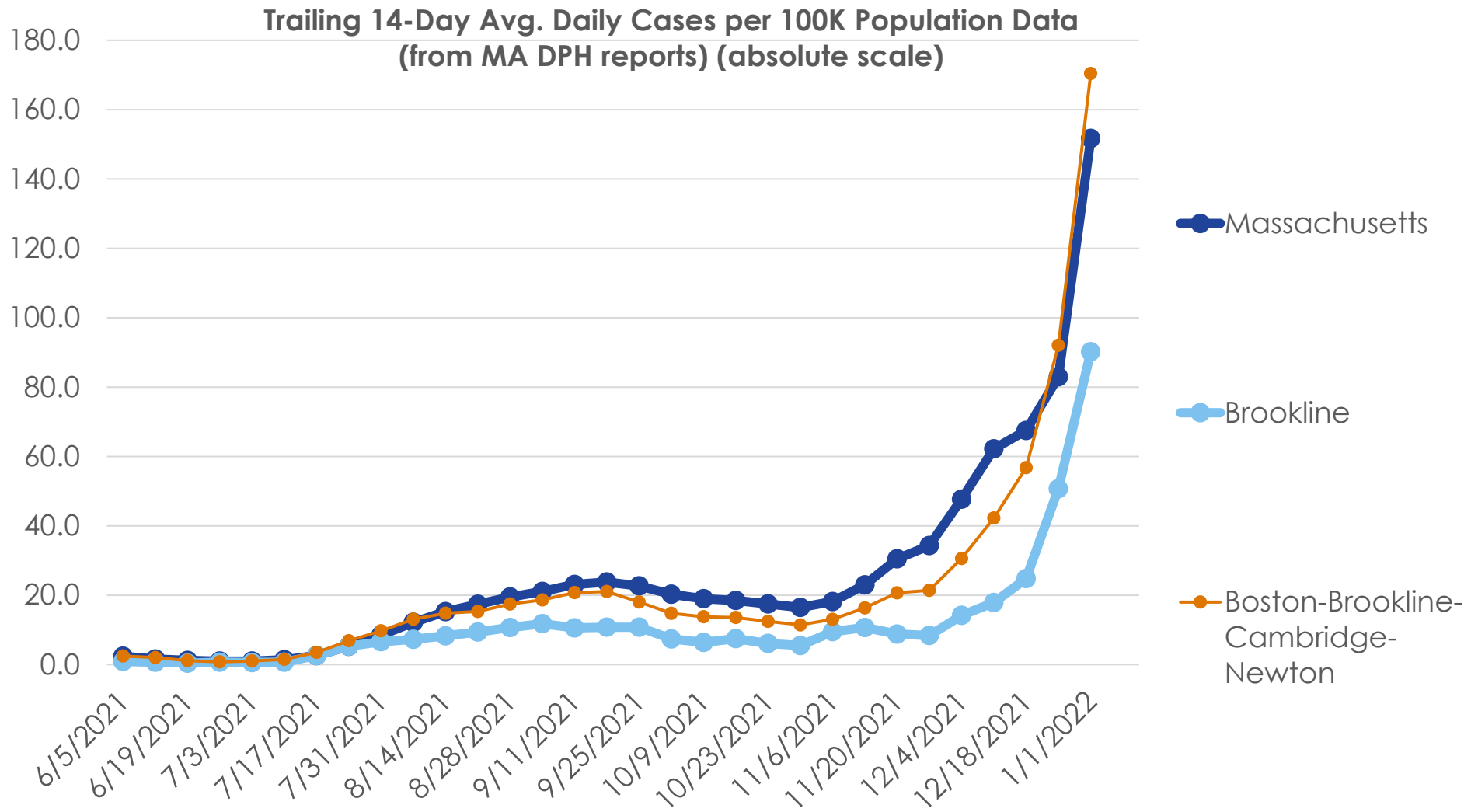
Group	Population		
	Under 10K	10K-50K	Over 50K
Grey	Less than or equal to 10 total cases	Less than or equal to 10 total cases	Less than or equal to 15 total cases
Green	Less than or equal to 15 total cases	<10 avg cases/100k AND >10 total cases	<10 avg cases/100k AND >15 total cases
Yellow	Less than or equal to 25 total cases	≥10 avg cases/100k OR ≥5% pos rate	≥10 avg cases/100k OR ≥ 4% pos rate
Red	More than 25 total cases	≥10 avg cases/100k AND ≥5% pos rate	≥10 avg cases/100k AND ≥4% pos rate

Brookline's population is ~63,000

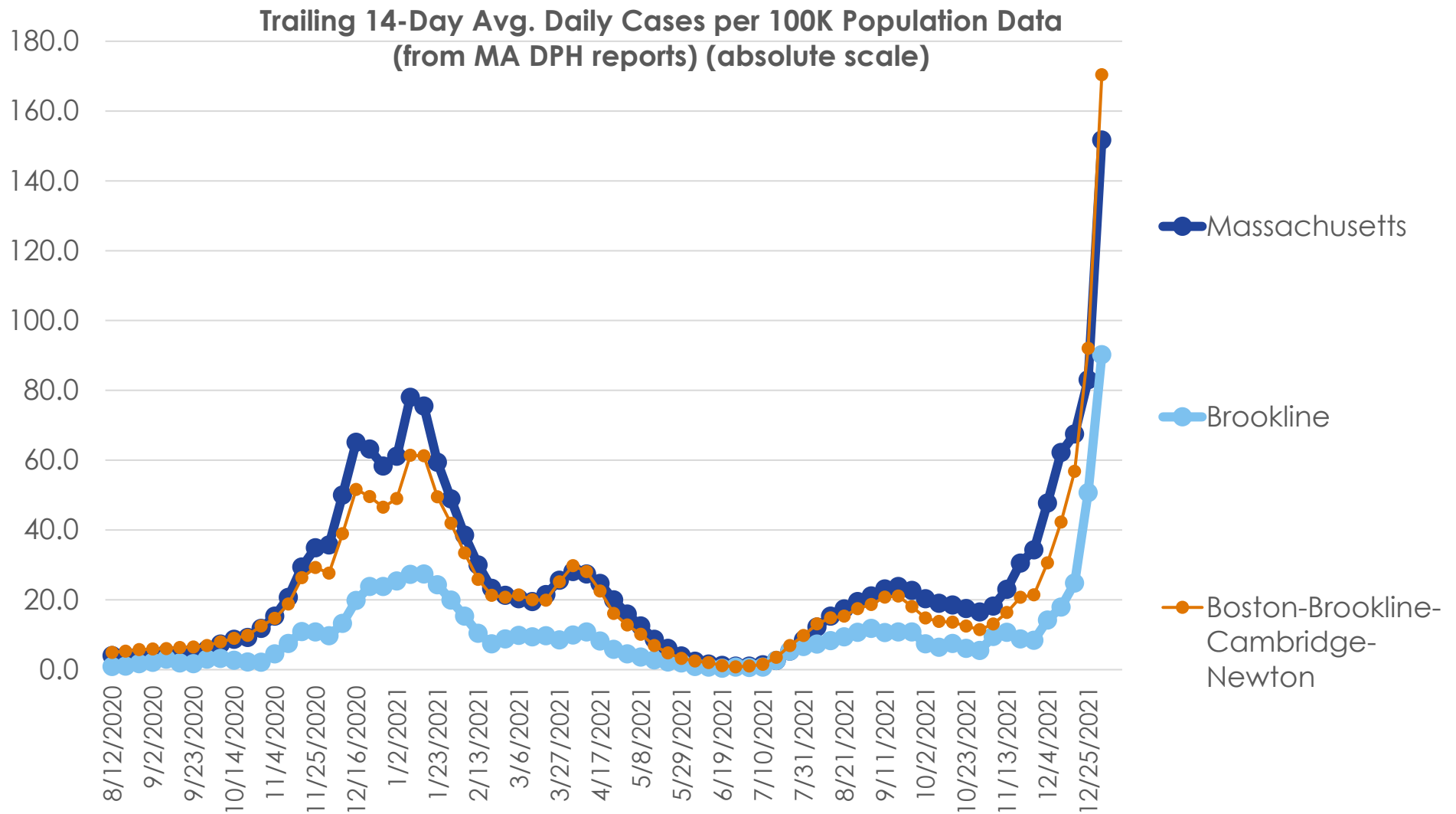
Brookline is here as of 1/1/22 (red)

As of 11/5, DPH is using 2019 population estimates derived from a method developed by the University of Massachusetts Donahue Institute. The 2019 estimates are the most currently available data.

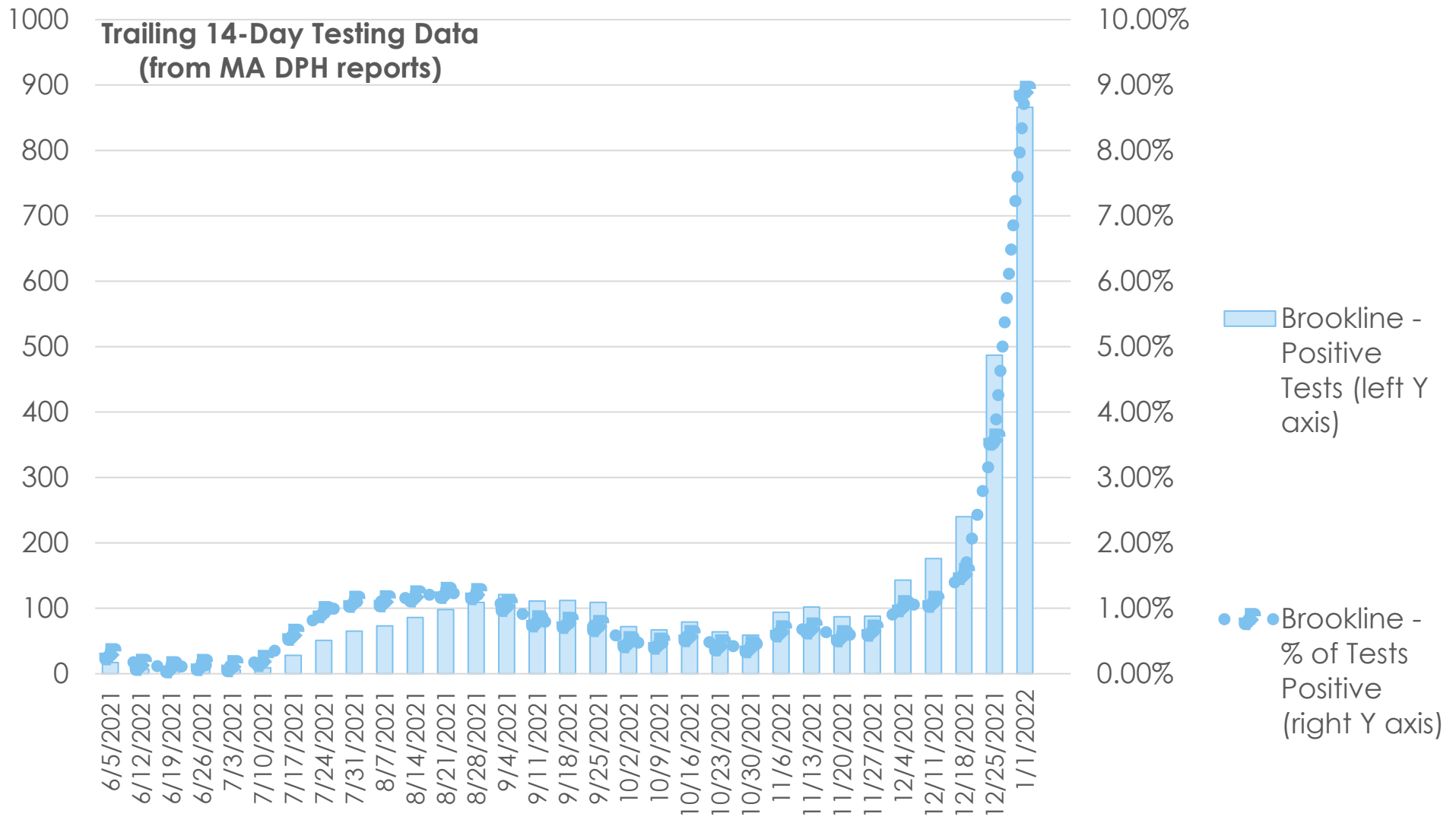
Trends: Avg. Daily New Cases per 100k



Trends: Avg. Daily New Cases per 100k

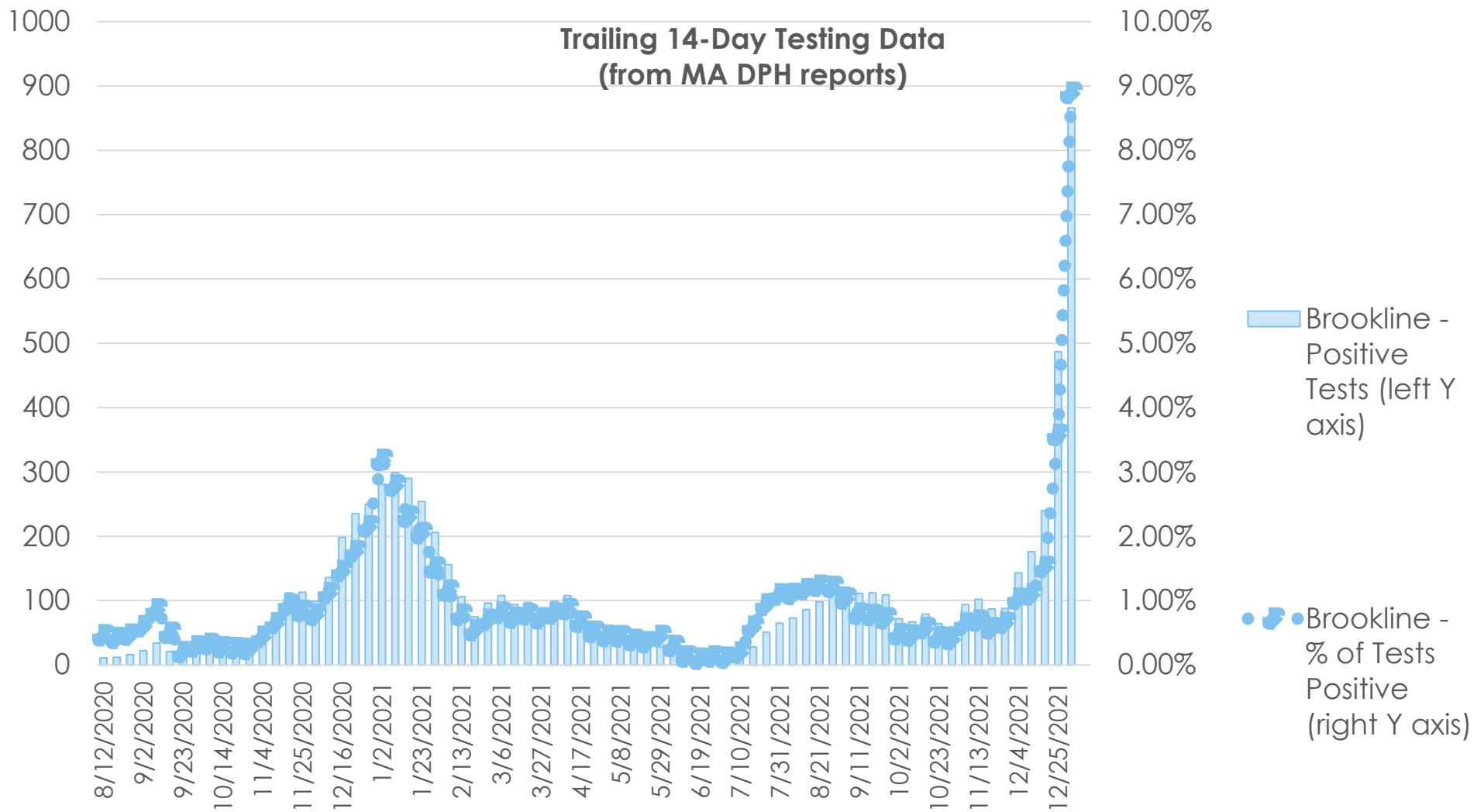


Trends: Test Positivity (Brookline)

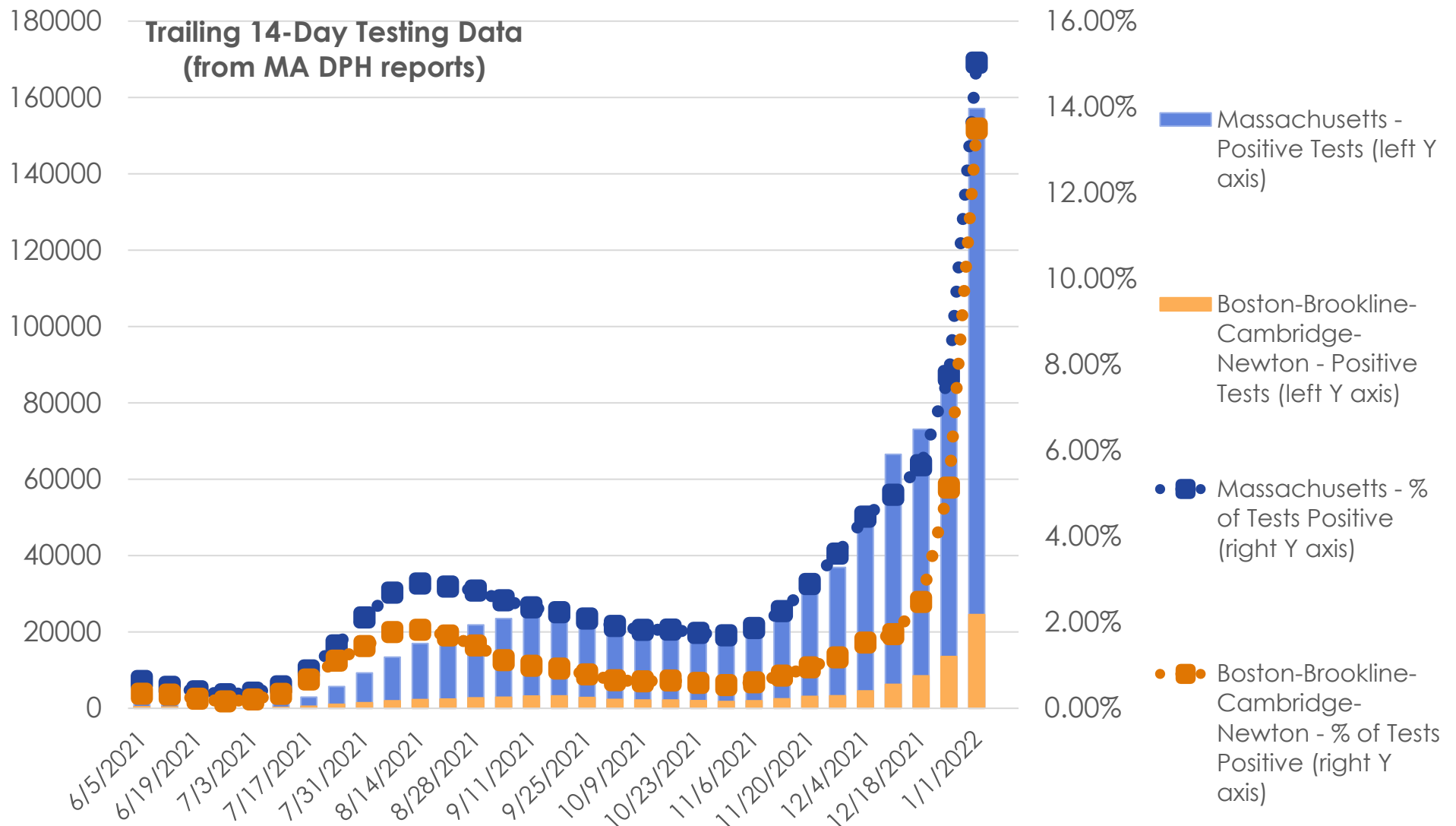


Data source: <https://www.mass.gov/info-details/covid-19-response-reporting>

Trends: Test Positivity (Brookline)

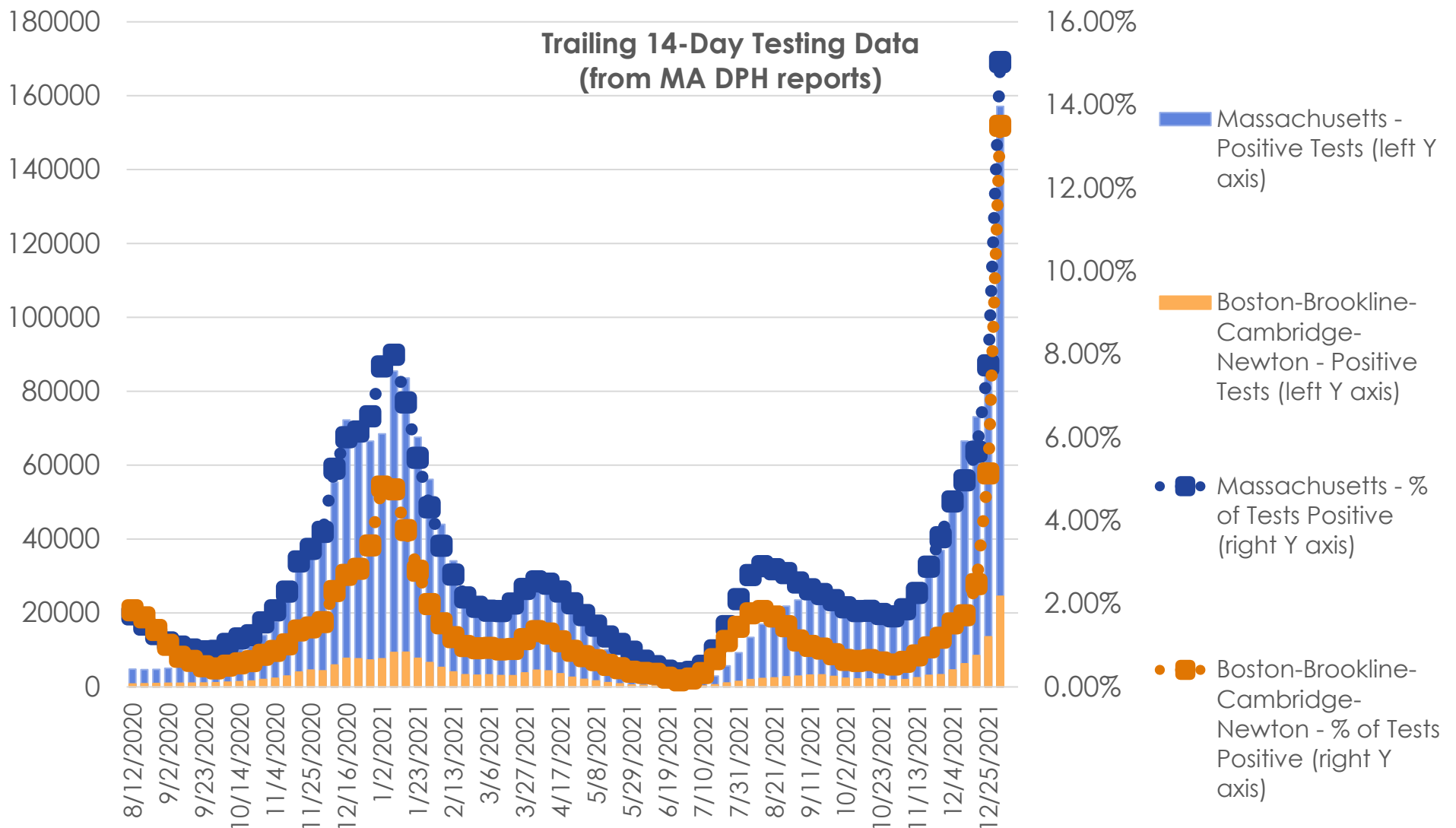


Trends: Test Positivity (Statewide)



Data source: <https://www.mass.gov/info-details/covid-19-response-reporting>

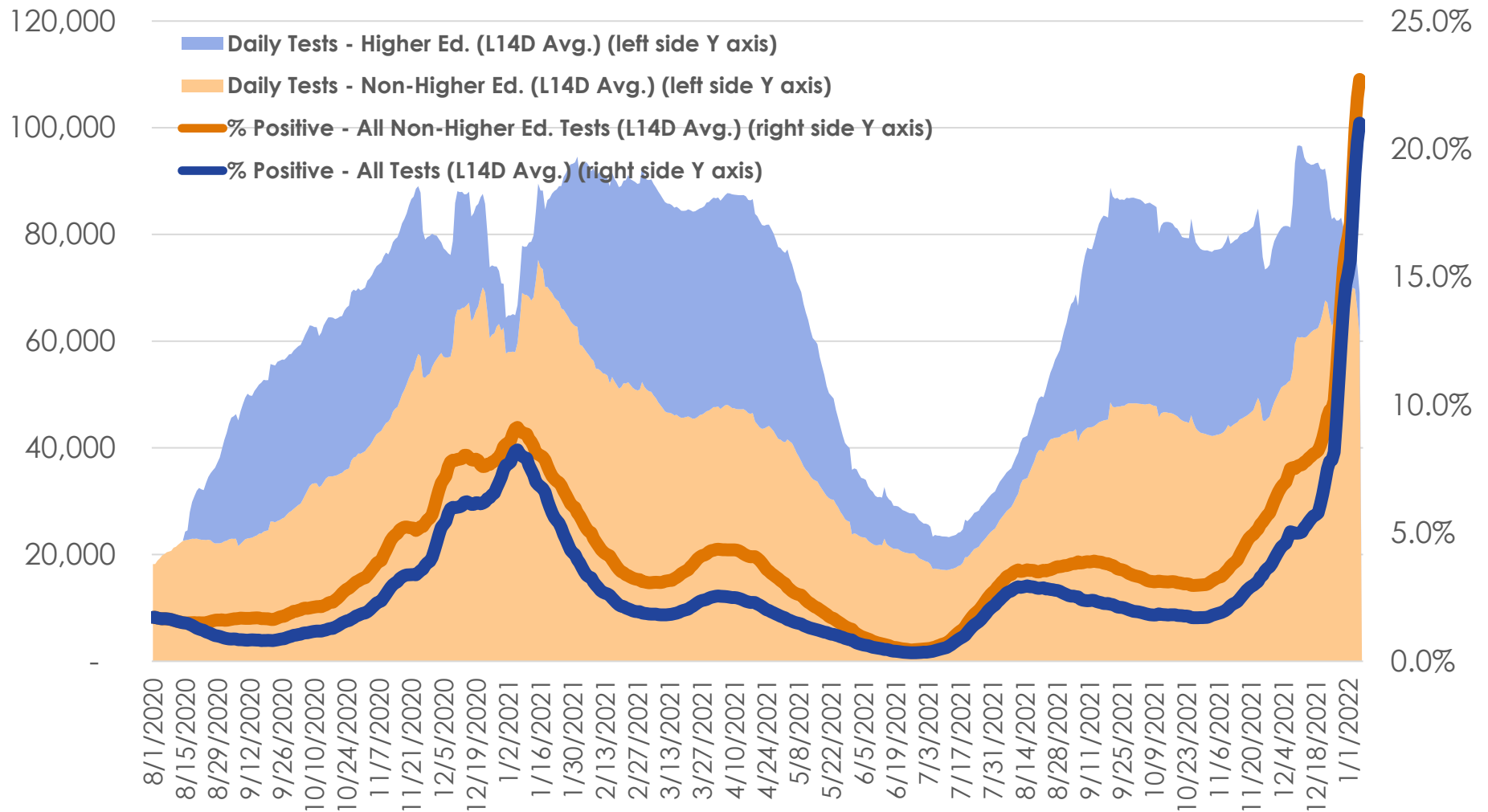
Trends: Test Positivity (Statewide)



Data source: <https://www.mass.gov/info-details/covid-19-response-reporting>

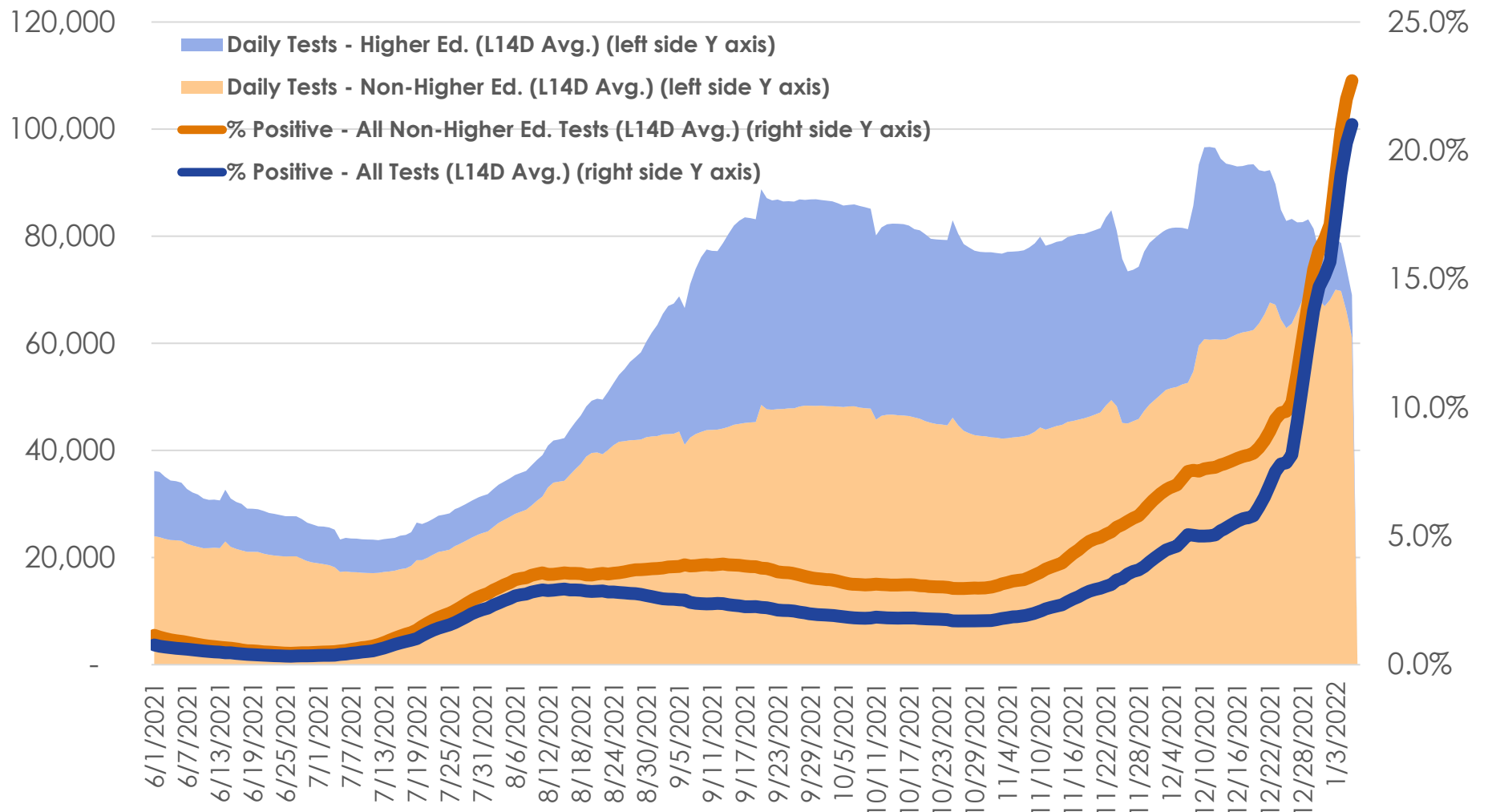
Trends: Test Positivity and Testing Volume (Statewide)

MA Statewide Test Positivity and Volume

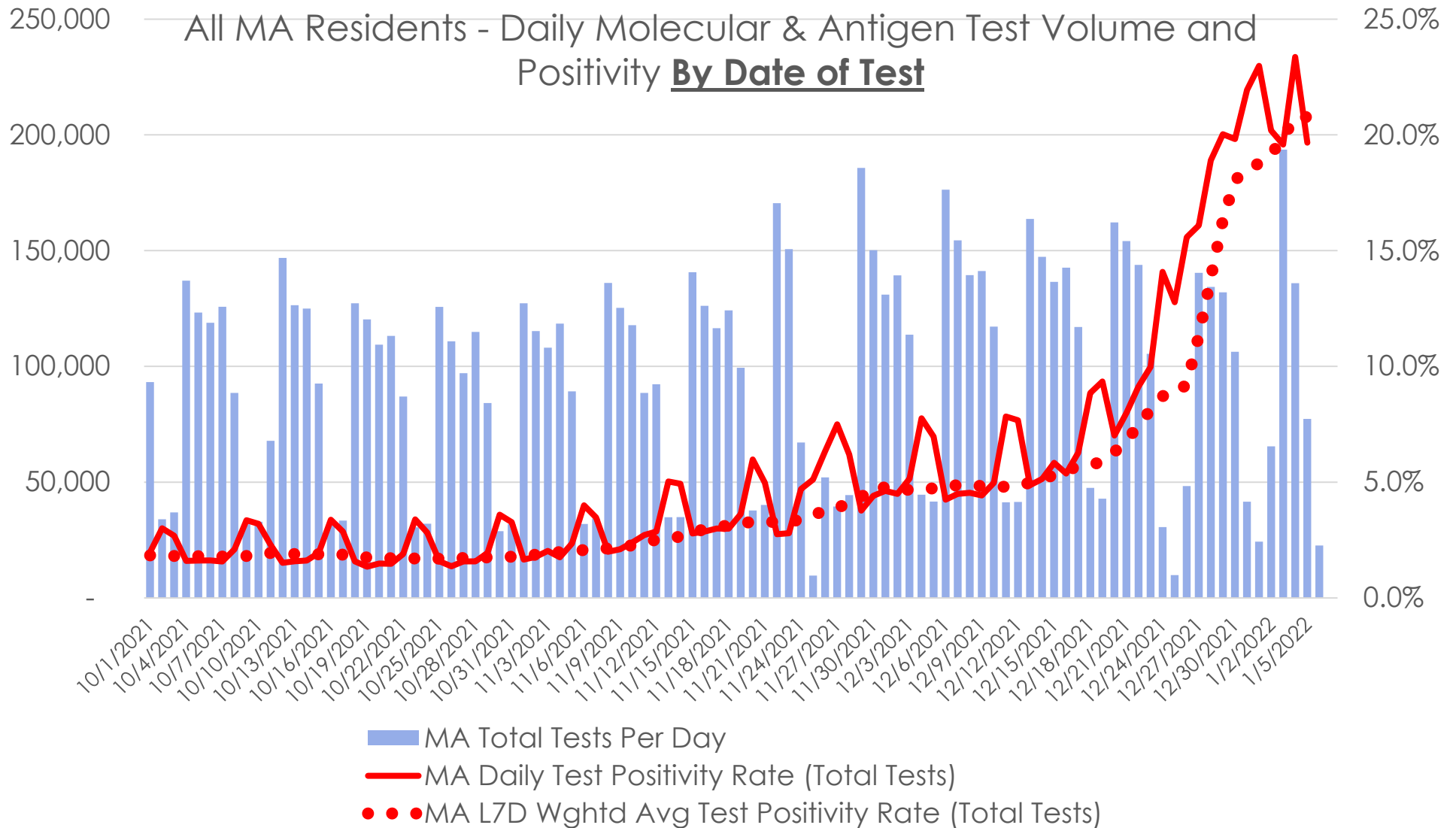


Trends: Test Positivity and Testing Volume (Statewide)

MA Statewide Test Positivity and Volume

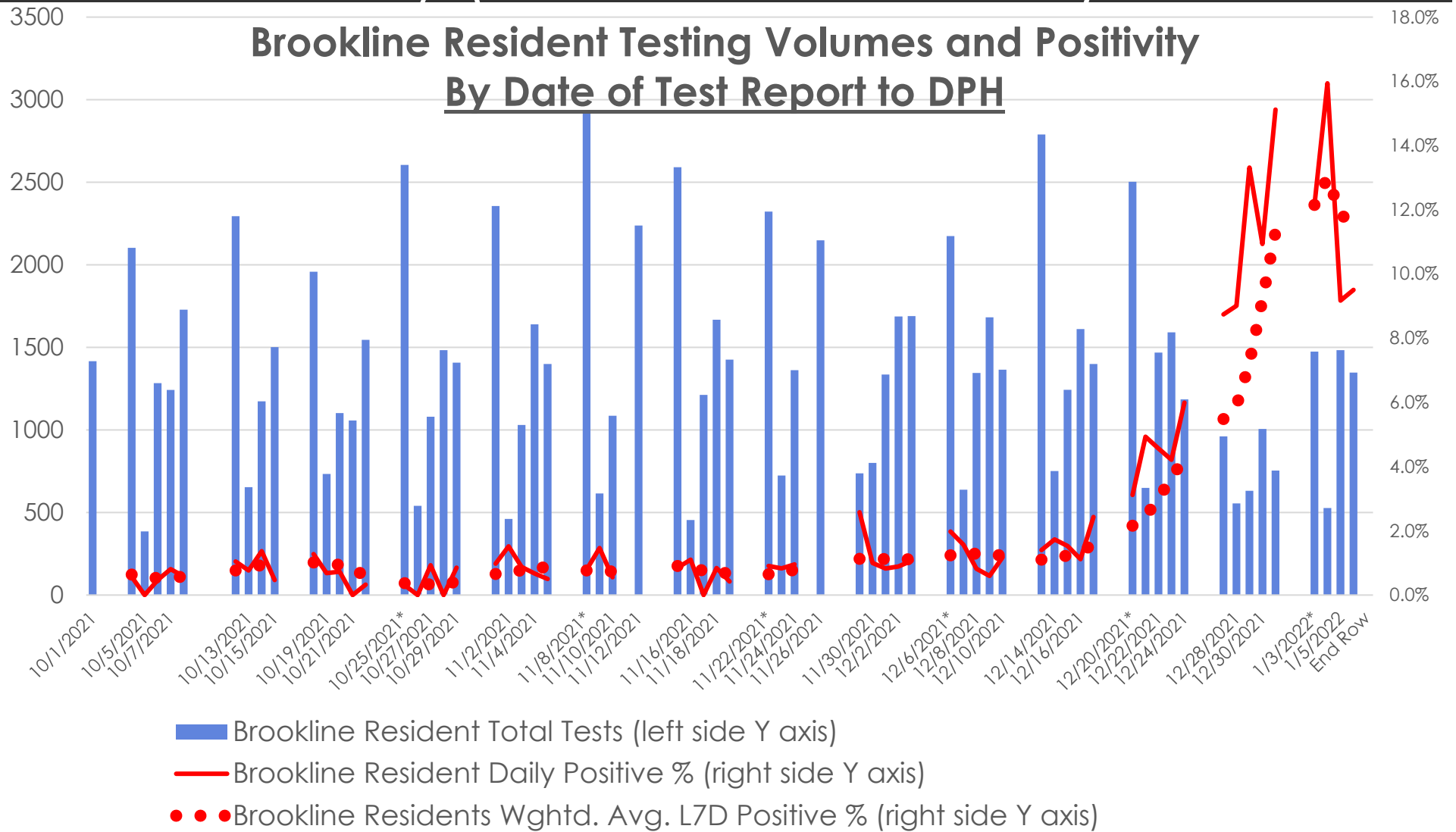


Trends: Daily Test Volumes and Positivity (Statewide)

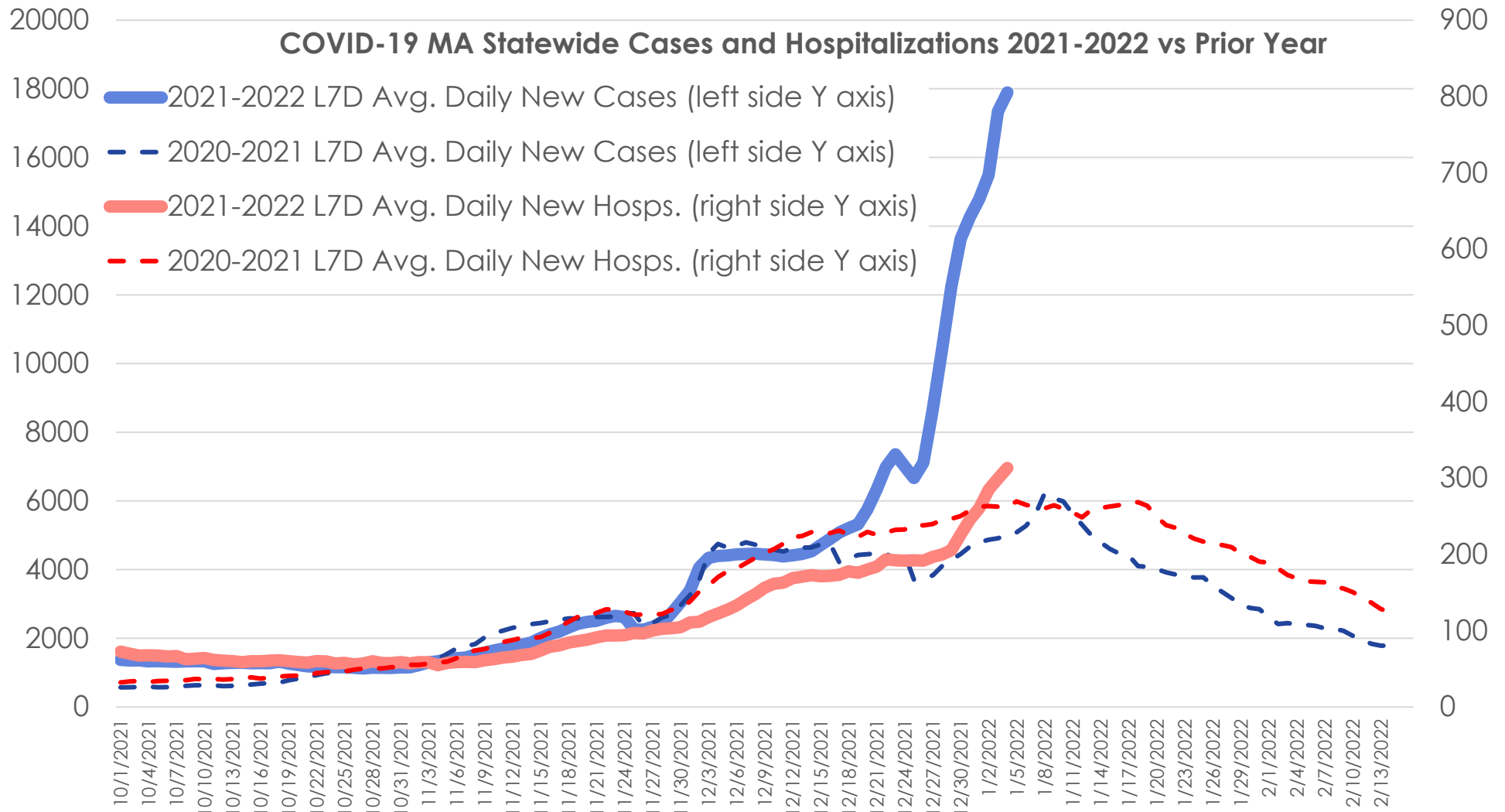


Data source: <https://www.mass.gov/info-details/covid-19-response-reporting>

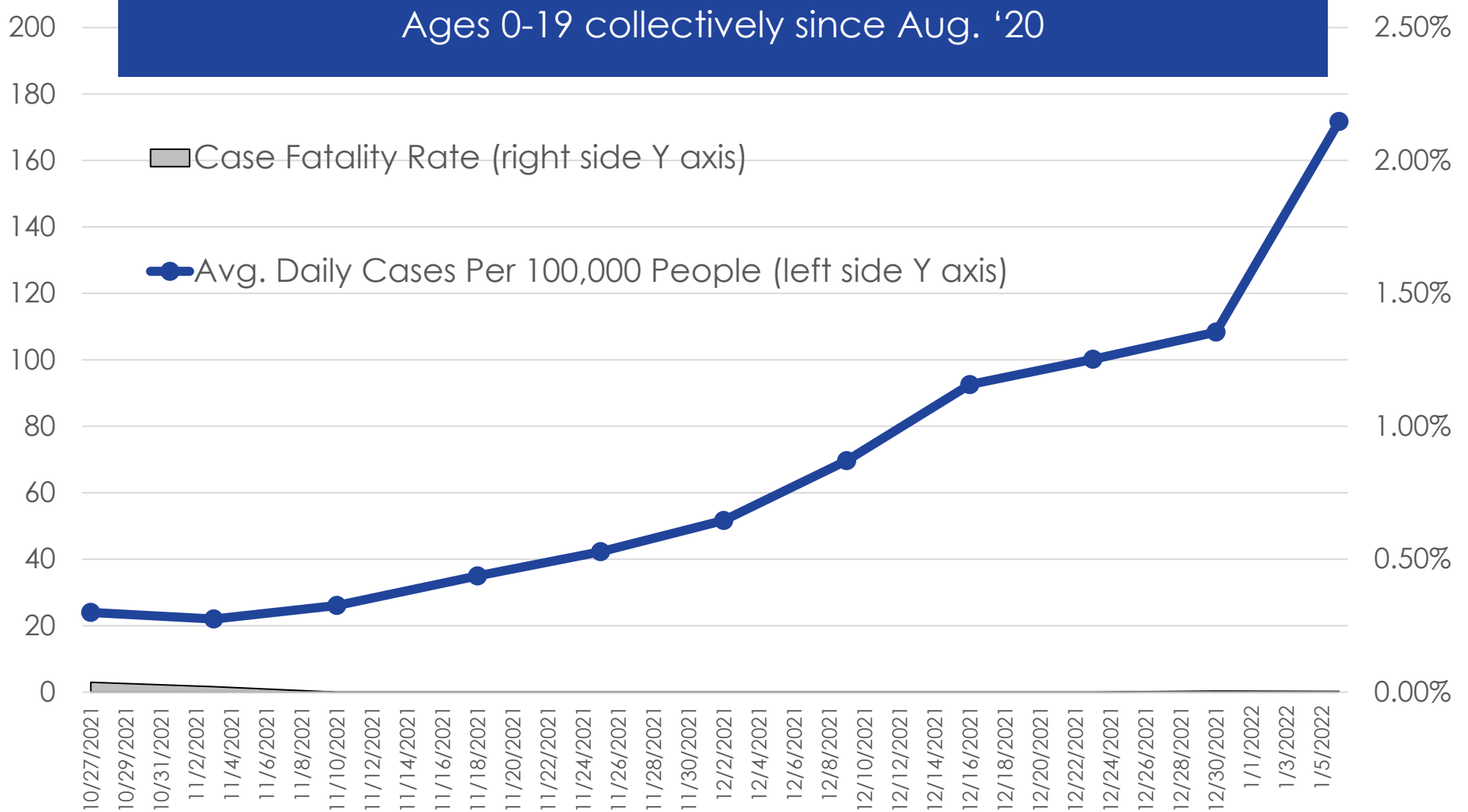
Trends: Daily Test Volumes and Positivity (Brookline Residents)



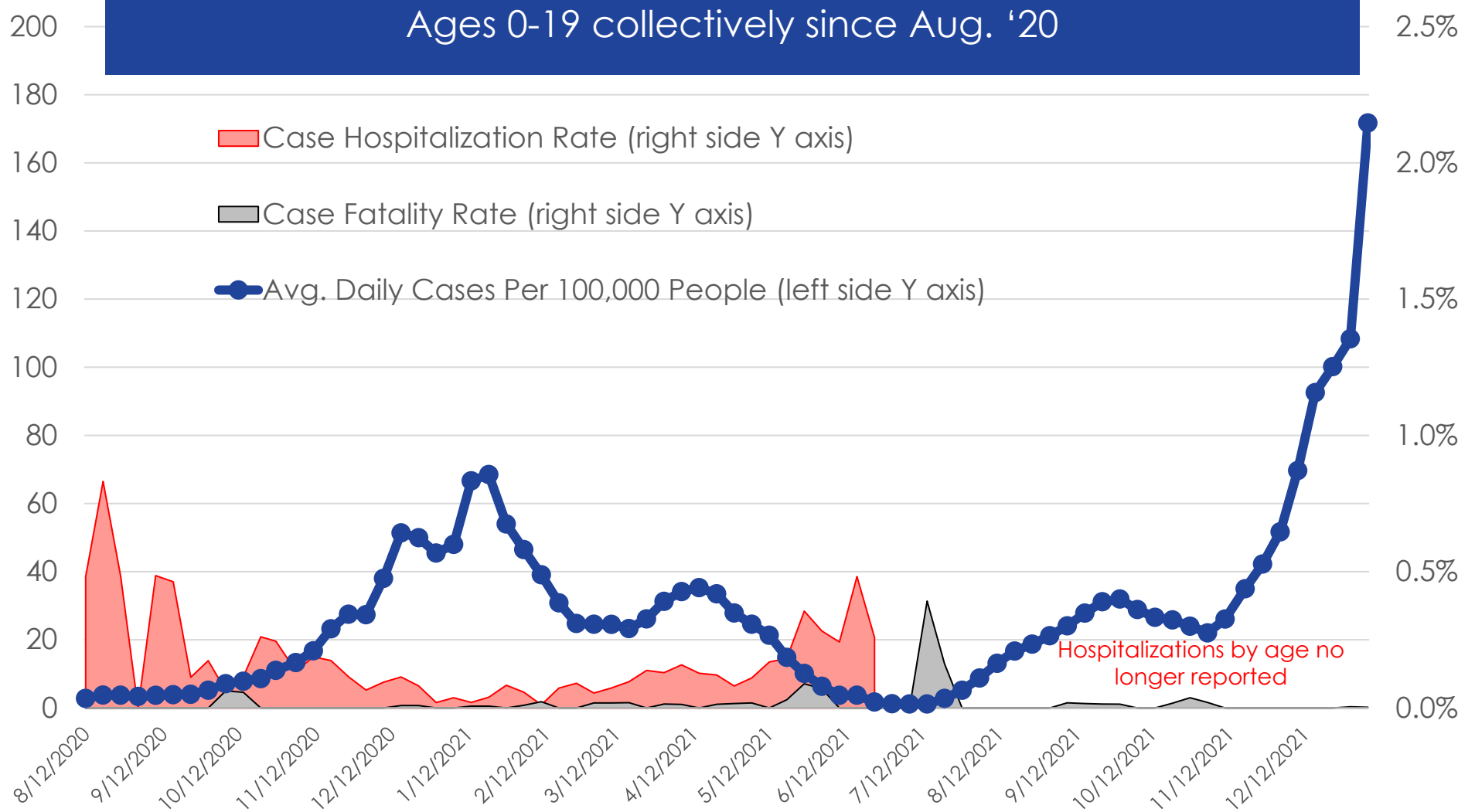
Trends: Daily New Cases and Hospitalizations (Statewide)



Trends: 0-19 Year-Old Age Cohort (MA Statewide)

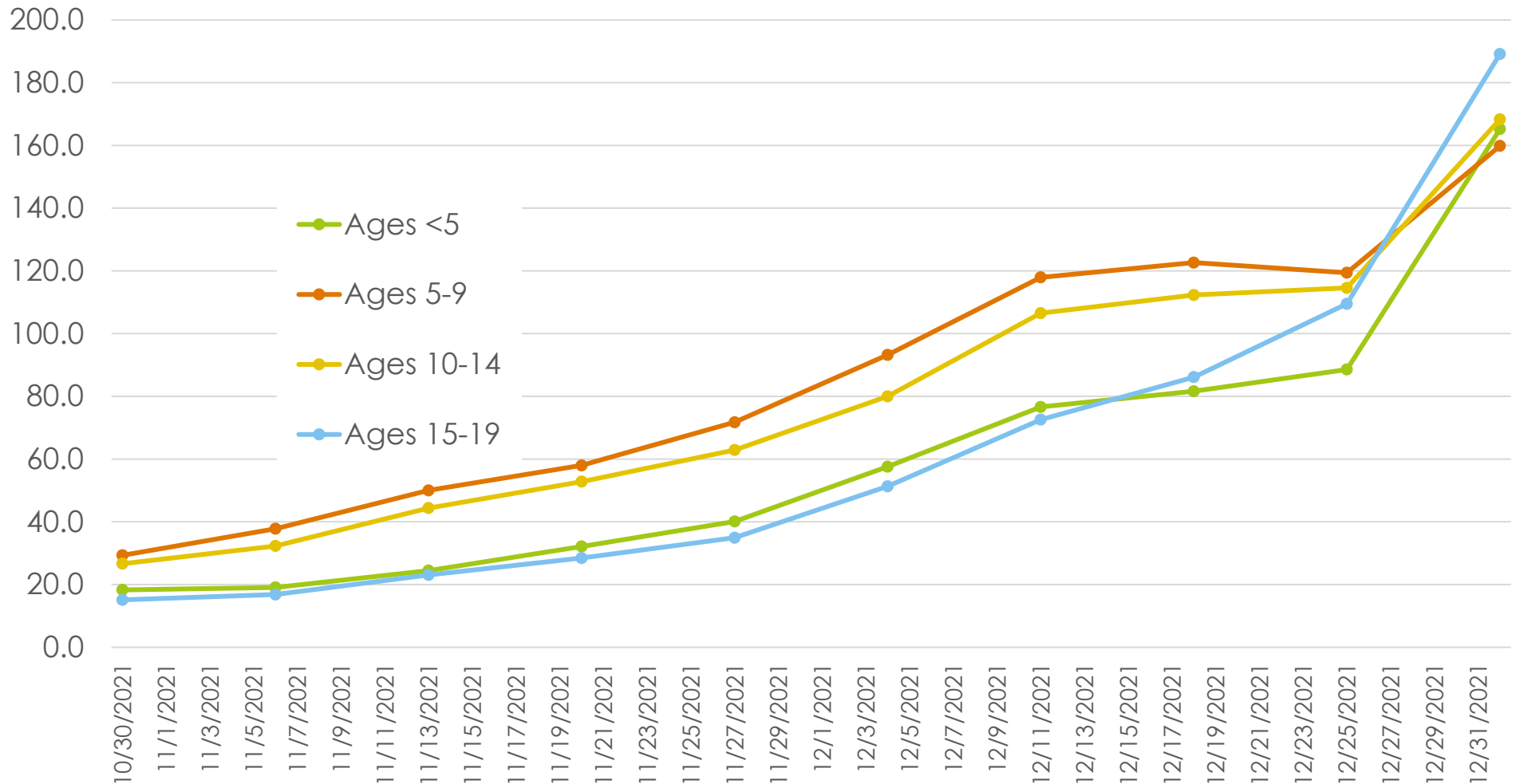


Trends: 0-19 Year-Old Age Cohort (MA Statewide)



Trends: 0-19 Year-Old Age Cohort (MA Statewide)

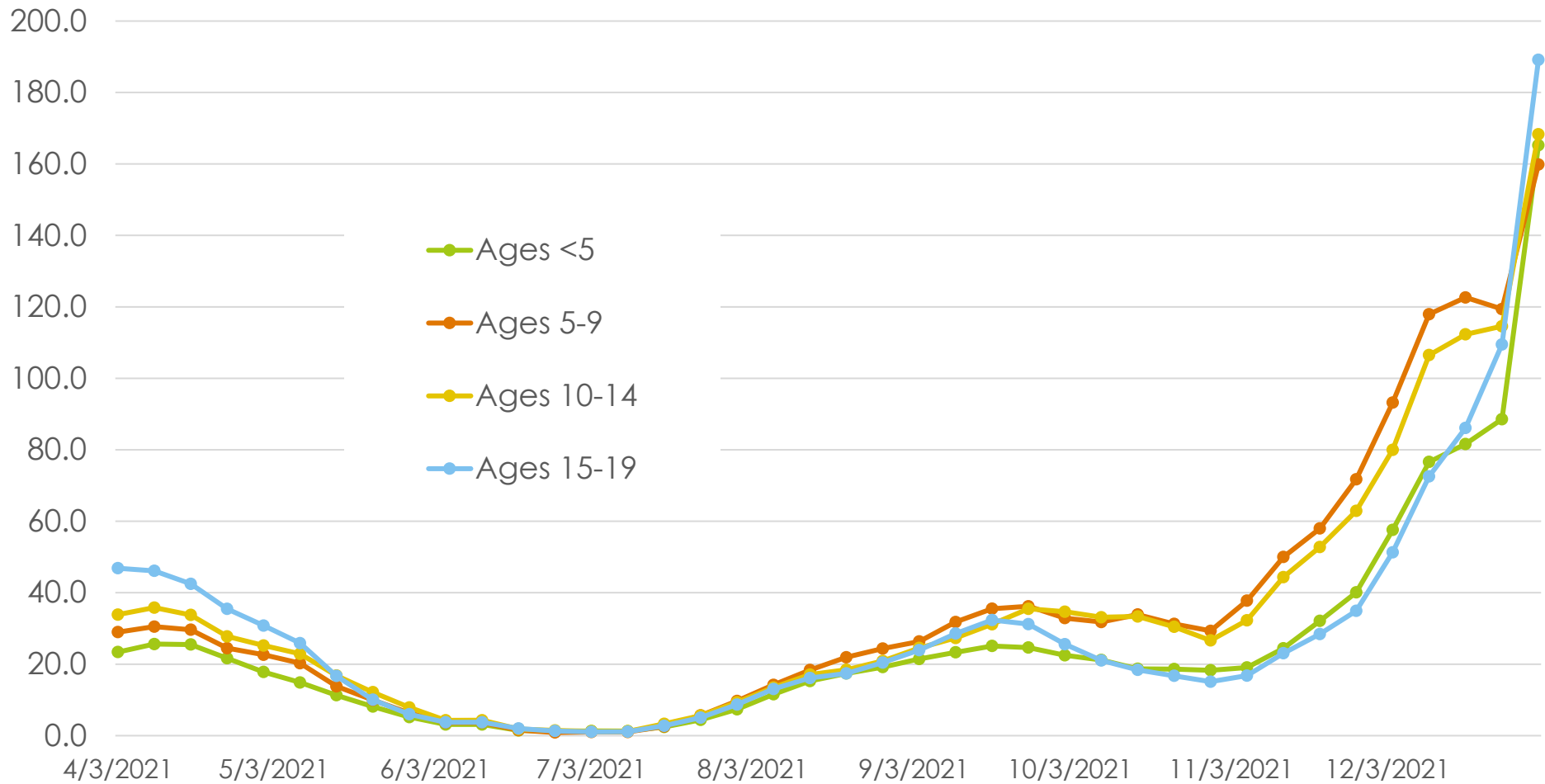
Avg. Daily Cases Per 100k Pop. in Age Range
(Trailing 2 Weeks)



Data source: <https://www.mass.gov/info-details/covid-19-response-reporting>

Trends: 0-19 Year-Old Age Cohort (MA Statewide)

Avg. Daily Cases Per 100k Pop. in Age Range
(Trailing 2 Weeks)



Trends: 0-19 Year-Old Age Cohort Hospitalizations

MA Population Ages 0-19		Avg. Daily Per 100k Population		
Start Date	End Date	New Cases	Hosp. Admissions	Approx. Case-Hosp. Rate
11/14/2021	11/27/2021	52	0.16	0.31%
11/21/2021	12/4/2021	70	0.17	0.24%
11/28/2021	12/11/2021	93	0.18	0.19%
12/5/2021	12/18/2021	100	0.18	0.18%
12/12/2021	12/25/2021	108	0.32	0.30%
12/19/2021	1/1/2022	172	0.69	0.40%

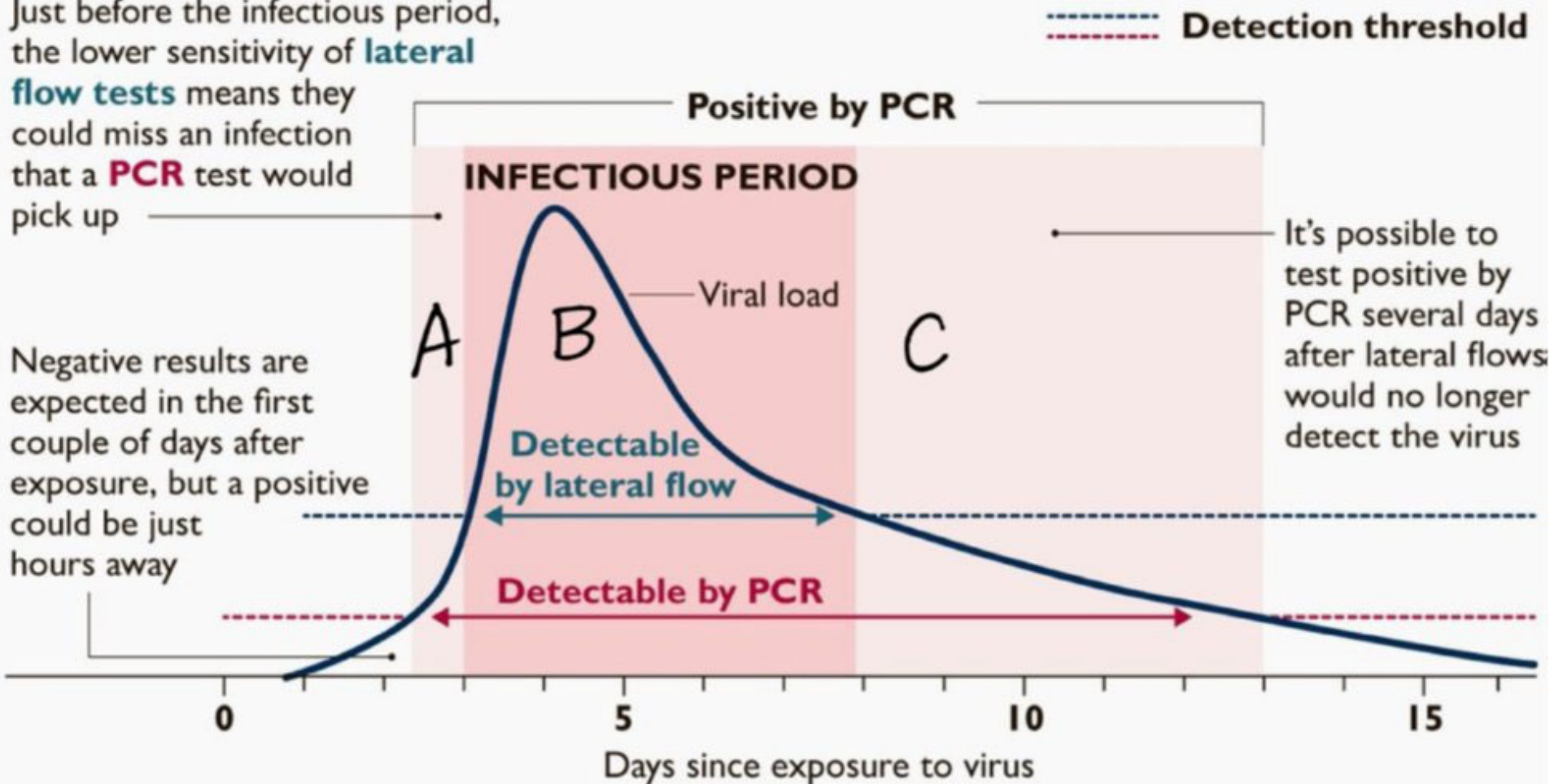
<i>Nationwide estimates from AAP/CHA</i>	Pediatric Case Hospitalization Rate	Pediatric Case Fatality Rate
Most Recent	0.8%	0.01%
Last 12 Mos.	0.8% - 0.9%	0.01%

Data source: <https://www.mass.gov/info-details/covid-19-response-reporting>; <https://www.aap.org/en/pages/2019-novel-coronavirus-covid-19-infections/children-and-covid-19-state-level-data-report/>

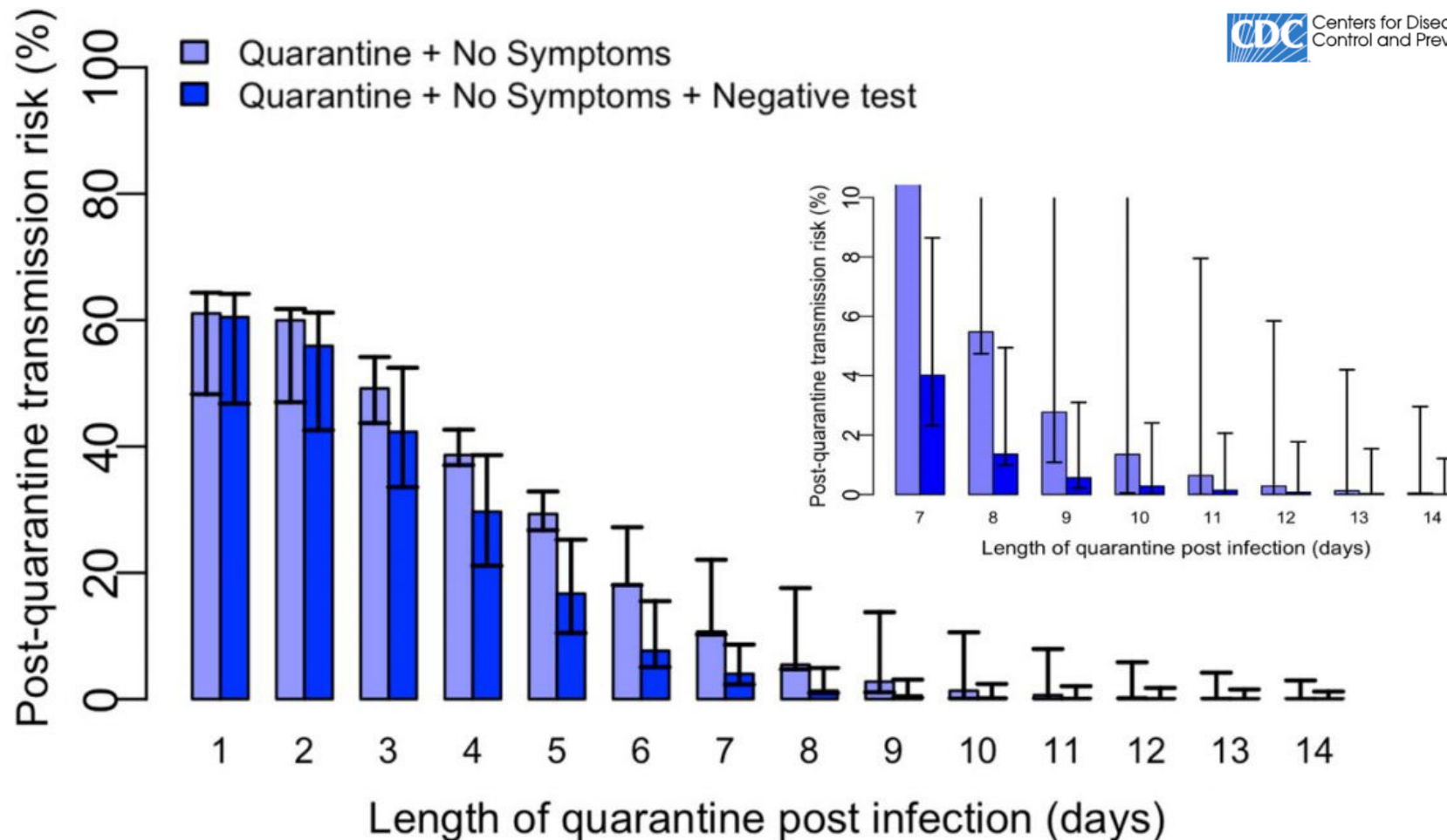
What do tests pick up?

Just before the infectious period, the lower sensitivity of **lateral flow tests** means they could miss an infection that a **PCR** test would pick up

Negative results are expected in the first couple of days after exposure, but a positive could be just hours away



CDC Guidance on Quarantine Length (Close Contacts)



Additional Resources Accessed Live

- **From PSB:**
 - Health Reminders 1/2/2022:
<https://www.brookline.k12.ma.us/site/default.aspx?PageType=3&DomainID=4&ModuleInstanceID=651&ViewID=6446EE88-D30C-497E-9316-3F8874B3E108&RenderLoc=0&FlexDataID=9913&PageID=1>
 - Protocols 1/2/2022:
<https://www.brookline.k12.ma.us/cms/lib/MA01907509/Centricity/Domain/4/1.2UpdateCOVIDProtocolsWithTranslations.pdf>
- **From Brookline HHS:** <https://brooklinecovid19.com/>
- **From MA DPH:** <https://www.mass.gov/info-details/isolation-and-quarantine-guidance-for-the-general-public>